



**ALASKA DIVISION OF HOMELAND SECURITY &
EMERGENCY MANAGEMENT**
SITUATION REPORT 24-079 • March 19, 2024



Toll-Free 1.800.478.2337

Anchorage Area 907.428.7000

SEOC 907.428.7100

<p><u>SEOC Preparedness Level</u> Level 1 – Routine Operations.</p>	<p align="center">http://ready.alaska.gov</p>	<p><u>National Terrorism Advisory System:</u> Read the NTAS Bulletin here</p>
<p><u>Maritime Security (MARSEC)</u> Level:1- Minimum Appropriate Security Measures</p>	<p>WHO Novel Coronavirus Pandemic (COVID-19): 2019 Novel Coronavirus</p>	<p><u>Alaska Military Installation Force Protection Level:</u> FPCON Bravo</p>

(Significant changes from previous situation reports are red.)

Significant Issues:

Unalakleet Excessive Snow Event

Yesterday morning, SEOC received a signed local declaration form from the City of Unalakleet due to extreme snow and wind events resulting in a large buildup of snow and blocking roadways. SEOC is in contact with the City Administrator to gather further information. SEOC will continue to monitor the situation and assist the City of Unalakleet as needed.

Chignik Bay Avalanche and Power Outage

The SEOC continues to work with the City of Chignik to identify response costs and damage impact statements as a result of the avalanche event from February 16.

State of Alaska Department of Health (DOH)

The DOH stands ready to assist with all aspects of public health and, in the event of a public health emergency, is supported by the SEOC and other state departments as required.

For current information, see: <https://health.alaska.gov/dph/Pages/default.aspx>
<https://health.alaska.gov/dph/Emergency/Pages/prepared/default.aspx>

NTAS Bulletin

The U.S. Department of Homeland Security issued an updated National Terrorism Advisory Bulletin on May 24, 2023. The current and expired bulletins can be viewed at the below link.

<https://www.dhs.gov/national-terrorism-advisory-system>

Travel Alerts and Conditions

For current driving conditions, dial 511 or visit: <https://511.alaska.gov/>

Barry Arm Landslide / Tsunami Risk

For the latest information on the Barry Arm Landslide and Tsunami risk, click here:

<https://dggs.alaska.gov/hazards/barry-arm-landslide.html>

Earthquakes

United States Geological Service (USGS) Earthquake Information: <http://earthquake.usgs.gov/>
National Tsunami Warning Center: <http://tsunami.gov/>

Alaska Volcanoes

Great Sitkin Alert Level: Watch and Aviation Color Code: **Orange**
Shishaldin Alert Level: Advisory and Aviation Color Code: **Yellow**

For Alaska Volcano updates, go to: <https://www.avo.alaska.edu/>

Air Quality Index (AQI) Advisories

For the most up-to-date Air Quality Index Advisories:
<http://dec.alaska.gov/Applications/Air/airtoolsweb/Home/Index>

Spills of Oil and Hazardous Substances

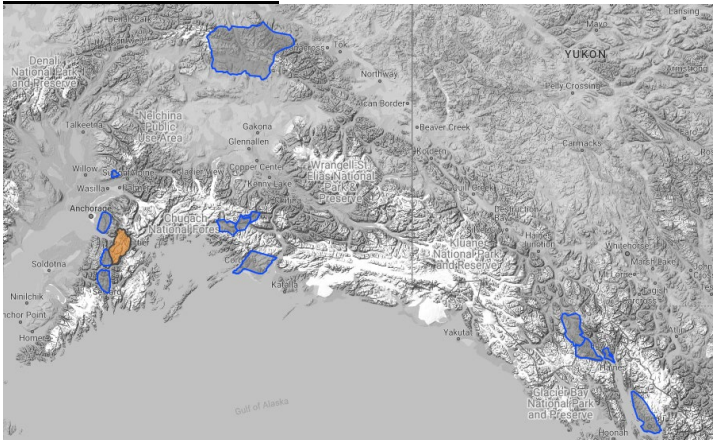
The Alaska Division of Environmental Conservation (ADEC) Spill Prevention and Response page is located at:
<https://dec.alaska.gov/spar/>

Alaska Cyber Security Information

State Employees may sign up for cybersecurity notifications and alerts at
<https://oit.alaska.gov/security>

Cybersecurity and Infrastructure Security Agency (CISA)-Cybersecurity Services and Tools:
www.cisa.gov/free-cybersecurity-services-and-tools

Avalanche Hazard

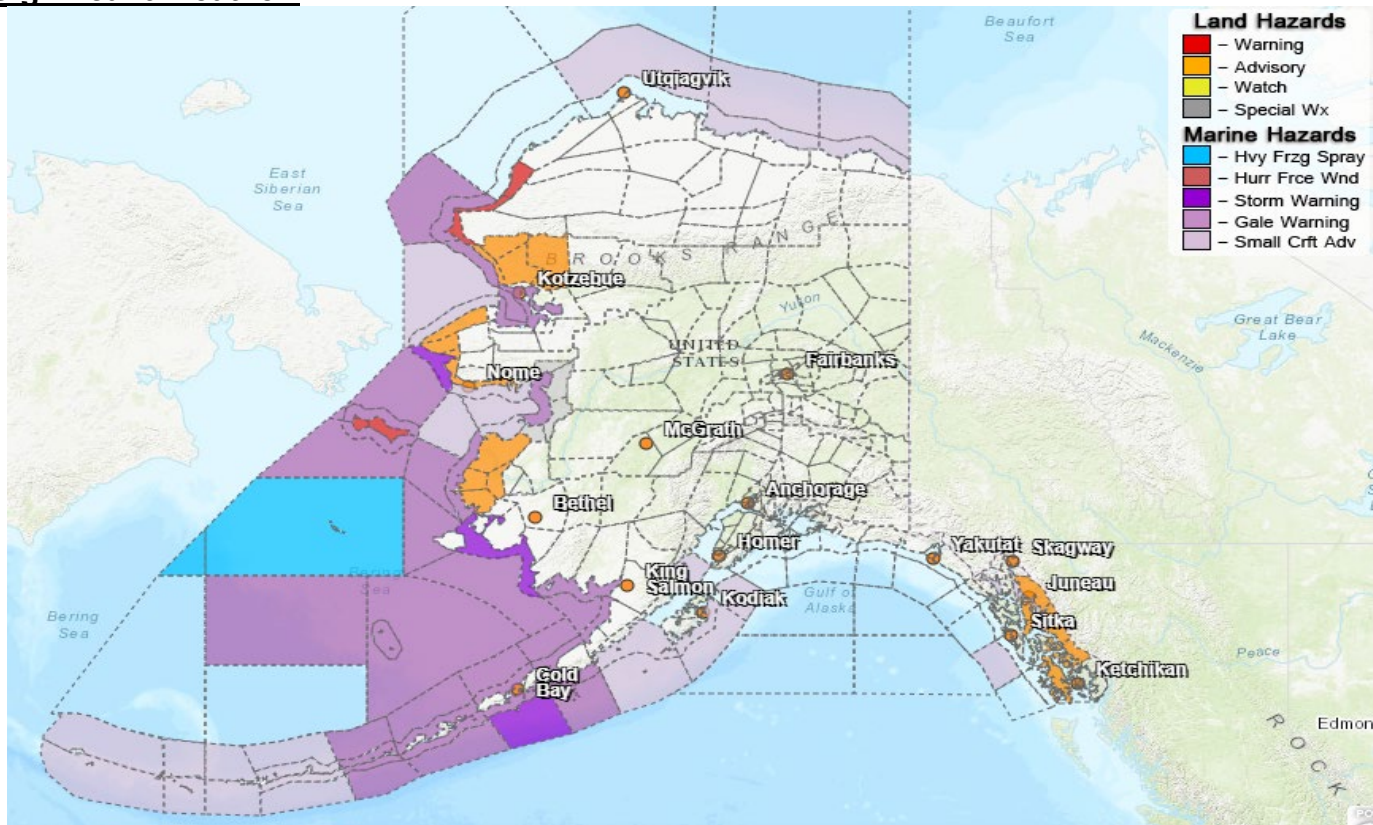


Travel in avalanche terrain is not recommended. Avoid being on or beneath all steep slopes.

Turnagain Pass- Moderate this am, rise to Considerable this afternoon

For information and the most current avalanche conditions, go to <https://alaskasnow.org>

Significant Weather:



Special Weather Statement

- **Bering Strait Coast, Seward Peninsula Coast, Easter Norton Sound** -Elevated water along Southern Seward Peninsula through Wednesday.

Dense Fog

- **Admiralty Islands, Juneau, Petersburg, Prince of Wales Island, Wrangell**-until noon today

Blizzard Warning

- **St. Lawrence Island** – until 1pm this afternoon

Winter Storm Warning

- **Western Arctic Coast**-in effect from 10am to 7pm this Wednesday

Winter Weather Advisory

- **Southern Seward Peninsula Coast**-until 4 am Wednesday
- **Kivalina and Red Dog Dock, Noatak Valley**-until 10pm Wednesday
- **Shishmaref, Bering Strait Coast**- until 4am Thursday

For more information and the most current weather, Watches / Warnings / Advisories go to:

<https://www.weather.gov/arh/>

The Next Situation Report will be **March 20, 2024**. A significant change in the situation or the threat level will prompt an interim report. This report is posted on the internet at <https://ready.alaska.gov/sitrep>.

To register for email distribution, go to <http://list.state.ak.us/mailman/listinfo/dhsem.situation.report>. Direct questions regarding this report to the SEOC at 907-428-7100 or seoc@alaska.gov.